



VIDEO
INSTRUCTIONS

15034

Pin & Bushing Adapter

// Safety Warning

Read all instructions and safety warnings prior to operation.

Failure to do so could result in equipment damage, personal injury, or even death.

- Stay Alert! Watch what you are doing and use common sense when operating this tool.
- Inspect product for damage prior to using; do not use if product is in unsafe condition.
- Do not operate tool while under the influence of drugs, alcohol, or medication.
- Always use safety equipment to prevent injuries. Approved face and eye protection must always be worn by the operator, as well as others in the work area.
- Do not overreach. Keep proper footing and balance at all times.
- Dress properly. Do not wear loose clothing or jewelry.
- Keep your hair, clothing and gloves away from moving parts.
- Keep hands clear of all pressurized hydraulic components.
- Always ensure hoses are free from sharp bends and kinks.
- Keep your work area clean and well lit.
- Cylinders are designed for 10,000 psi (700 bar) maximum working pressure. Do not connect to a pump with a higher rated pressure. Use a pressure gauge in the system at all times. Ensure all components in the system are rated for 10,000 psi (700 bar).

Tiger Tool International Incorporated Limited Warranty and Exclusion of Liability. For more information, visit tigertool.com

Warranty Coverage

Tiger Tool International Incorporated ("Tiger Tool") offers a Lifetime Warranty on its branded tools (the "Lifetime Warranty") and a 2-year warranty on its branded hydraulic components (the "2-Year Warranty") to customers who purchase from Tiger Tool or its Authorized Dealers. The Lifetime Warranty and the 2-Year Warranty (referred to together as the "Warranty") cover defects in materials and workmanship.

Exclusions and Limitations of Liability

The Warranty only applies to new tools or hydraulic components owned by the original customer and used according to the specific instructions for use provided by Tiger Tool with the product.

The Warranty excludes tools and hydraulic components subjected to abnormal use, misuse, accidents, modifications, neglect, or lack of maintenance.

Tiger Tool's liability for any Warranty claim is limited to repairing the tool or hydraulic component, replacing it, or refunding the purchase price at its sole discretion. Tiger Tool reserves the right to change the design, material, and construction of its tools and components, and to discontinue any tool or hydraulic component, at any time without notice.

The Warranty is the only warranty and exclusive remedy available to the customer. Tiger Tool is not liable for any other damages or claims relating to or arising from any alleged defect in materials or workmanship, including economic loss, bodily injury, property damage, or indirect or consequential damages such as lost profits, revenues, sales, business opportunities or goodwill, or business interruptions or delays, special damages, costs, or interest. Tiger Tool and the customer agree that the implied warranties in section 18 of the Sale of Goods Act do not apply.

If Tiger Tool denies a Warranty claim, the customer must retrieve the tool at their own expense within four months of notice of the denial. Tiger Tool will attempt to contact the customer three times during this period. After four months, the customer forfeits any claims or interests in the tools.

Disputes arising from this Warranty or related to the sale or use of a tool will be governed by the laws of British Columbia and adjudicated in Vancouver, B.C. Canada, by a sole arbitrator under the Arbitration Act.

Warranty Claims

To make a Warranty claim, customers must obtain an RMA from our website (www.TigerTool.com) and then send the tool to one of the specified addresses, pre-paid and insured at their own expense.

US Returns: Tiger Tool 115 First Street PMB-T75520, Sumas, WA 98295

Canada Returns: Tiger Tool 160-34434 McConnell Road, Abbotsford, B.C., V2S 7P1



To make a return or to learn more about the Tiger Tool Return Policy, scan or visit tigertool.com/policies/refund-policy

U.S. Patent No.

11815132, 11999034, 11999034, 12377527

TIGER TOOL

Canada
160-34434 McConnell Road,
Abbotsford, BC V2S 7P1

USA
115 First Street, PMB-T75520
Sumas, WA 98295



Did you know?

You can now call or text Technical Support.
1.800.661.4661

Operating Instructions

View the Pin & Bushing Adapter Kit demonstration video online at tigertool.com

NOTE: Hammering this tool will void your warranty.

VIDEO
INSTRUCTIONS



Required adapter components for bushing 16-20508

15001-129 Installer
15001-130 Remover
15001-135 Installer 2

Required adapter components for bushing 16-19978

15001-131 Installer
15001-132 Remover
15001-136 Installer 2

Bushing Removal

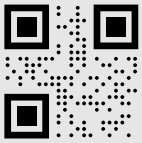
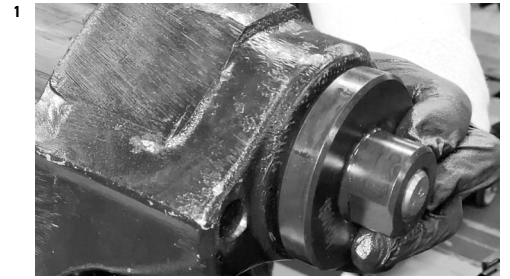
- 1 Insert the Threaded Rod through the bushing and thread the Remover adapter flush with the end of the rod. **(Figure 1)**
- 2 Thread Cylinder Adapter (15001-134) along with its Face Plate (15001-133) onto the Tiger Tool Hydraulic Cylinder (17202 - Not Supplied) and then, over the Threaded Rod. **(Figure 2)**
- 3 With the assembly aligned, thread the Hex Nut (15001-90) into position ensuring the step is facing the Hydraulic Cylinder. **(Figure 3)**
- 4 Apply hydraulic pressure and carefully inspect to ensure the bushing and the Remover adapter are leaving the bore unobstructed. As the Hydraulic Cylinder reaches its maximum stroke (2"), release pressure and re-tighten the Hex Nut and re-apply hydraulic pressure until the bushing has been fully removed. **(Figure 4)**
- 5 Remove the bushing and breakdown the tooling.



Operating Instructions

Bushing Installation

- 1** Insert the Threaded Rod through the bore and thread the Installer adapter flush with the end of the rod. **(Figure 1)**
- 2** Thread the Installer Adapter 2 onto the Hydraulic Cylinder and place the new bushing along with the assembled Hydraulic Cylinder onto the Threaded Rod. **(Figure 2)**
- 3** With the assembly aligned and the new bushing seated against the Installer 2 Adapter, thread the Hex Nut onto Threaded Rod ensuring the step is facing the Hydraulic Cylinder. **(Figure 3)**
- 4** Apply hydraulic pressure and carefully inspect to ensure the bushing is entering the bore straight. As the Hydraulic Cylinder reaches maximum stroke (2"), release pressure and re-tighten the Hex Nut and re-apply hydraulic pressure until the bushing has been fully seated against the Installer Adapter which will cause the hydraulic cylinder to stop. **(Figure 4)**
- 5** Disassemble tool and Inspect the busing to ensure successful installation. Clean the tooling and place back in the case.

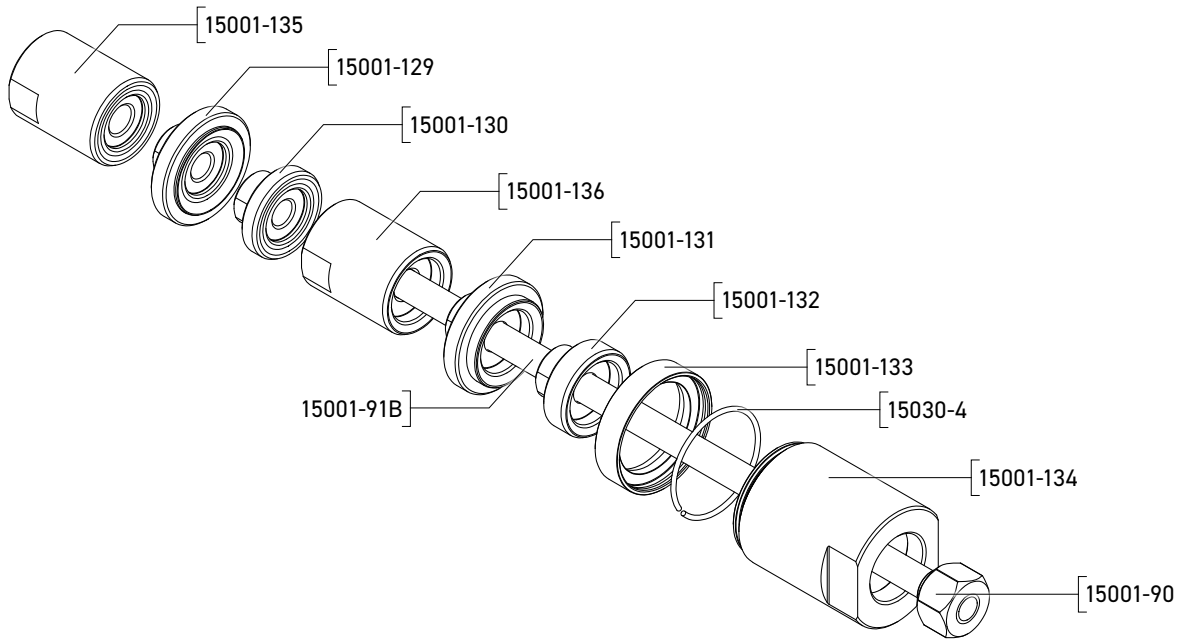


Need some assistance with your Tiger Tool?

No worries! Scan this QR code with your phone to start texting with someone who can help out.

1.800.661.4661

Parts Breakdown



Part Number	Description	Qty.
15001-90	3/4"-16 Hex Nut Custom	1
15001-91B	3/4"-16 X 20" UNC Threaded Rod B7	1
15001-129	16-20508 Installer	1
15001-130	16-20508 Remover	1
15001-131	16-19978 Installer	1
15001-132	16-19978 Remover	1
15001-133	16-20508 & 16-19978 Face Plate	1
15001-134	16-20508 & 16-19978 Cylinder Adapter	1
15001-135	16-20508 Installer 2	1
15001-136	16-19978 Installer 2	1
15030-4	External Snap Ring	1